

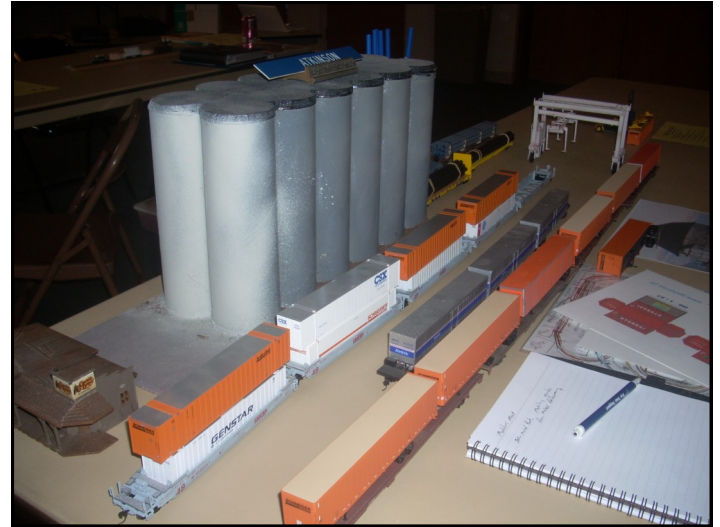


*The newsletter of  
the Central Indi-  
ana Division of  
the Midwest Re-  
gion, National  
Model Railroad  
Association*

Volume 42 – Number 3      June – July 2012

## Spring Modeler's Meet Inspiring

Our second Modelers Meet went well. We were at a new location that gave us more space, and the opportunity to do our Clinics in the same area as where models and displays were located. This helped to manage the security of models brought for display. Both Newman Atkinson and Tom Cain brought intermodal models in anticipation of Richard Seymour's Clinic on Intermodal equipment and modeling Intermodal transportation. Newman brought a set of trailers on flatcars where TTX is using multiple flatcars to transport 53' trailers. With three 53' trailers on two flat cars the middle trailer straddles a drawbar connecting the two flat cars. He has devised a system to improve tracking and keep the trailers in place especially on curves. Tom Cain brought some Walther's TTX spline cars that he had weathered and had replaced the stock wheels with Intermountain semi scale



Some of the various Intermodal cars that were on display at the spring Modelers Meet  
(Photo by Rich Seymour)

wheels for a more prototypical appearance.

Dick McPherson brought some more of his excellent modeling projects including a matched set of Northern Pacific F units and some craftsman kit models. Steve Studley brought an Athearn bay

(Continued on Page 3)



One of Dick McPherson's fine structures he displayed at the spring Modelers Meet  
(Photo by Rich Seymour)

### -- Directory --

Spring Modelers Meet Inspiring .....	Pg 1
Directory .....	Pg 1
CID Board Directory .....	Pg 2
Calling Clinicians for MILEPOST 50.....	Pg 3
Interchange Track .....	Pg 4
2012 Regional Convention Well Done .....	Pg 5
Upcoming Events.....	Pg 6
CID Board Meeting Schedule.....	Pg 6
Rusty Spike Deadlines .....	Pg 6
Pike Ads.....	Pg 7
NMRA Arrivals .....	Pg 7
2012 Board of Directors Election .....	Pg 8
Martinsville Meet's Second Year .....	Pg 3
Martinsville Favorite Contests .....	Pg 8
Pike Ads.....	Pg 9

The **RUSTY SPIKE** is the official publication of the Central Indiana Division, Midwest Region, National Model Railroad Association, and is published at least five times a year just prior to meets. It is sent FREE to all N.M.R.A. members in the C.I.D. and non-members may subscribe for \$5 per year. Articles for publication are welcome for the benefit of the readers and the hobby but cannot be paid for. Submit articles for publication to the Editor; address changes or mailing problems to the Circulation Manager; and advertising or advertising inquiries to the Publisher.

#### **Circulation Manager**

Jim Wilhite  
4823 Buttercup Way - Anderson, IN 46013  
Ph. 765-644-1887 – jwilhite1@att.net

#### **Editor/Publisher**

Keith Clark  
4132 Briar Gate Drive - Bloomington, IN 47404  
Ph. 812-876-6799 – gtwfan@bluemarble.net

#### **Webmaster**

Roger Hensley  
602 E. 31st Street - Anderson, IN 46016-5416  
Ph: 765-649-2367 – rhensley\_anderson@juno.com

**CID web site** <http://cid.railfan.net/>



The Columbus Area Railroad Club is dedicated to serving all those interested in the preservation of railroad history through the use of modeling, photography, artifact preservation, and railfanning.

Memberships are available

We have operating layouts in O and On-30 and we are in the process of building new layouts in HO and N scales. Come and see the progress and our new home!



#### **Public Hours:**

Third Saturday of the month starting October 2010

12 p.m. to 4 p.m.

Free Admission

#### **Location:**

Johnson County Park  
Park Building  
2949 North Street  
Edinburgh, IN

#### **Questions/Info:**

812-343-4800

## **CID Board Members**

#### **- Superintendent -**

Steve Studley  
5115 N Echo Bend  
Bloomington, IN 47404-9040  
Phone: (812) 876-9726  
Internet: studley@indiana.edu  
**Clinic Manager**

#### **- Asst. Superintendent -**

Keith Clark  
4132 W. Briar Gate Dr.  
Bloomington, IN 47404-9511  
Phone: (812) 876-6799  
Internet: gtwfan@bluemarble.net  
**Rusty Spike Editor/Publisher & PR Manager**

#### **- Paymaster -**

Tom Fitzsimmons  
13964 Avalon Blvd  
Fishers, IN 46037-7284  
Phone: (317) 570-9578  
Internet: tfitzhome@yahoo.com  
**Model Contest Manager**

#### **- Chief Clerk -**

Rich Seymour  
8504 W Thorn Tree Rd  
Muncie, IN 47304-8701  
Phone: (765) 759-6856  
Internet: rseymour@bsu.edu  
**Historian**

#### **- Trainmasters -**

Dan Goins - Martinsville  
Phone: (765) 342-7069  
Internet: santafedangoins@comcast.net  
**Back Shop Manager**

Trevor Jones - Bloomington  
Phone: (317) 625-7626  
Internet: trevjn@comcast.net  
**Module Manager, Carmel Show Manager & Martinsville Meet Manager**

John Pancini - Avon  
Phone: (317) 272-3796  
Internet: jp Pancini@indy.rr.com  
**Danville Meet Manager**

Brad Phibrick  
Phone: (317) 577-4194  
Internet: ic127rail@sbcglobal.net

Dave Randolph - Lafayette  
Phone: (765) 404-0521  
Internet: csxdave1@frontier.com

Jack Simpson - Indianapolis  
Phone: (317) 374-5444  
Internet: jackshoosierline@aol.com

Chuck Tuttle - Lafayette  
Phone: (765) 463-0531  
Internet: catuttle@comcast.net

Jim Wilhite - Anderson  
Phone: (765) 644-1887  
Internet: jwilhite1@att.net  
**Circulation & Membership Manager**

#### **- Managers -**

Roger Hensley - Anderson  
Phone: (765) 649-2367  
Internet: rhensley\_anderson@juno.com  
**Webmaster**

Bill Litkenhous - Scottsburg  
Phone: (812) 414-2599  
Internet: Mrlit47170@gmail.com  
**Midwest Region President**

#### **-Past Superintendent -**

Thomas Cain  
6383 Dover Road  
Indianapolis, IN 46220-4551  
Phone: (317) 475-7834  
Internet: atsf93@comcast.net  
**Noblesville Meet Manager, Layout Tour Manager & CID AP Manager**

## **Modelers Meet**

(Continued from Page 1)

window caboose that he is kitbashing to recreate a prototype caboose for the Indiana Railroad. Tom Fitzsimmons brought an HOn30 narrow gauge locomotive project that he was working on that had required that he make his own resin castings for the boiler and other parts. This was for a Climax loco using an Nscale Lifelike SW9 switcher chassis. All I can say is that it might have been HO scale but it was small and it had a DCC decoder in there too!

Jeff Carter brought one of his newest G scale projects, which was a factory with a working smoke generator. Newman had just done a clinic on this at our Martinsville Train show so they enjoyed comparing construction techniques and operation. Jim Bengert traveled the furthest to come to the Meet. He rode his motorcycle from Evansville! Jim was on our layout tour in Evansville a few years back. He loves to show his layout off and has special tours at Christmas time to raise money for the Susan G. Komen organization.

Tom Fitzsimmons and Steve Studley did a clinic on the Achievement Program to show us how to work towards the different NMRA Achievement Award Certificates and eventual Master Modeler Award. We even had an MMR in the audience!

The main thing that we accomplished though was providing CID members the opportunity to sit down and chat with each other and just learn what people are doing with their model railroad projects. We hope to see you next time.

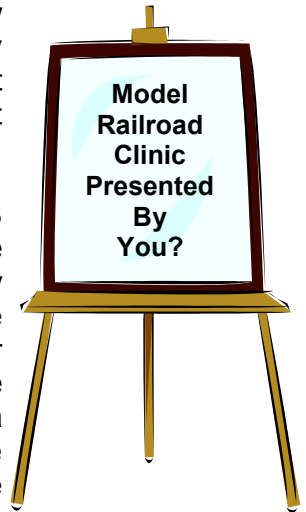
**Tom Cain**



Steve Studley presents a clinic at the Modelers Meet  
(Photo by Rich Seymour)

## **Calling Clinicians for MILEPOST 50**

The 2013 Midwest Regional Convention is going to be held here in Indianapolis May 2 - 5, 2013. One of the highlights of any convention are the clinics that are put on. It gives us all an opportunity to learn new things, and I know for myself I always walk away from a convention with at least a few things that I want to try out.



As hosts for the 2013 convention, members of the CID will be the primary source of clinicians for the weekend. We are looking for members who would be interested in putting on a clinic or two over the weekend. We all have unique talents and knowledge in the hobby that others would benefit from. If you have a project that you are planning to accomplish over the next 10 months or so, document it and use it as a topic for a clinic! Clinics / presentations on prototype railroads and history are also very popular. The potential topics that are appropriate for a clinic are almost limitless. If any CID members are interested in being a clinician at the 2013 Regional Convention, please contact me at 317-435-8869 or [stevejohns@yahoo.com](mailto:stevejohns@yahoo.com).

The other important item when it comes to talking about clinics is what do the members want to see? If all our clinics were on HOn3 and Western Prototypes, I would presume that those might not be the most popular topics for our members, but who knows? Maybe there are more D&RGW and UP modelers in the MWR than I know of! If you have any topics that you'd like to see clinics on, let me know and I'll try to find an "expert" to put one on. If there was a clinic done in the past or at another convention you went to that you think should be repeated or brought to the MWR, let me know!

May of 2013 might seem like a long time away, but it takes some planning and time to develop a clinic, and it will take me some time to line up enough quality clinicians so that the attendees of the convention have a great experience. Thanks for your input.

**Steve Johnson**

## Wallet or Workbench

In a previous Interchange Track (IT)\*, spending money to save time during the construction of your railroad was mentioned. After attending a recent Saturday activity, I'd like to revisit the wallet-or-workbench question. The activity allowed me to interact with other CID modelers who are like-minded when it comes to scratchbuilding, kit-bashing, and utilizing prototype-based data to produce a custom model for their layout. The previous wallet-or-workbench premise was to use your wallet to save time during the construction of your railroad empire. In this IT we'll move the sliding scale toward the workbench side of the equation and, rather than discussing a way to save time, the subject will be about advancing your modeling skills and increasing your enjoyment of the hobby.

The activity mentioned above was the second CID Modelers Meet. There were 11 modelers attending with many of them bringing examples of their work for display and discussion. Items included scratchbuilt, kit-bashed, craftsman-kit, or super-detailed models with many of them built to model specific prototype cars or structures. These models are not of the shake-the-box variety. They often require a fair amount of research before construction is started. Drawings, photos, and personal site visits are usually necessary to ensure the modeler has enough data to accomplish his/her goals. Then, when construction begins, time is required to fabricate parts, produce sub-assemblies, paint, letter, and do the final assembly.

If you are new to this type of modeling, you'll want to practice your existing modeling skills on some easy-to-accomplish projects. Head to your workbench to scratchbuild a simple storage shed using scribed wood or plastic. Or, kit-bash a couple plastic structure kits into a model that better fits the design of your prototype railroad structures. How did you do? A good way to check your work is to use a digital camera to photograph your model. Upload the photos to your computer and check out your modeling

with a critical eye. You should also use that same critical eye to check out your photographic work. If your model (or photography) could use some more work, either start over or modify/repair what you've just built. Continue these steps until you are pleased with the results. The goal is to get better at modeling.

When you've mastered the techniques to produce a well-built, simple model, learn some advanced techniques to move up to a more complex structure that might include complete 2X4 framing, individual board-by-board siding, individual hand-cut cedar shingles, scratchbuilt windows with glazing and doors with doorknobs, and those typical outdoor accoutrements (if appropriate) – electrical service, gas meter, gutters and downspouts, TV antenna or dish, etc. You'll go through another period at the workbench incorporating these new techniques and honing your skills. As above, the goal is to get better at modeling.

How, you may ask, do I learn advanced techniques? Read the monthly magazines, both print and internet. Construction articles demonstrate many useful modeling techniques. And remember, just because the article might be about a scale other than your own, a lot of the techniques are still useful. Also, there are many soft-cover books on this subject published by the major model railroad magazines. Try your local hobby shop (LHS) or library.

The CID can help, too. At each CID meet we try to schedule two clinics. There have been several clinics about advanced modeling techniques given during the last few years. Save some time between shopping and eating to attend these clinics. Also while attending CID meets, make sure you have a look at the models that are on display or are there for Achievement Program assessment. They are displayed next to the Favorites contests. If you have questions, you can ask someone at the CID tables. We'll try our best to find an answer for you. Bring an item of your work for display or enter something in a Favorites contest. When we have the next Modelers Meet, we'd like for you to visit with a model showing your newfound skills and techniques. It's time to head to the workbench...

"Clear signal at Sycamore Hollow"

**Steve Studley**  
**Superintendent**

\* *Rusty Spike*, Vol. 41, Issue 2



## 2012 Regional Convention Well Done

I heard a train whistle, sprang from my hotel room bed and ran to the window. With great luck the room I had overlooked a street crossing about a block away on the Norfolk Southern through Springfield, Illinois. Watching the trains pass through was just part of the three days that my wife and I spent at "Railsplitter 2012", the Midwest Regions annual convention.

We arrived on Thursday afternoon, checked-in to the hotel, picked up our convention materials and then joined friends for dinner. I, Trevor Jones and Steve Studley then attended an operating session on the N Scale layout of Walt Gabehart. It was a very nice layout and we had a truly enjoyable time running trains.

Friday morning brought the attending of several clinics and I came away from each one with something new. I have found that even if I believe that a clinic topic is something that I am very familiar with, the presenter will always have a different idea about some aspect that I had not thought of and could use in my own modeling. Meanwhile my wife Marge was on a tour of the Dana -Thomas House designed by Frank Lloyd Wright. As a former art teacher I would have loved to have seen it myself. In the afternoon several of us went to see some of the layouts that were open. I must say that quality of the layouts that were open was superb, very well done. Saturday brought more clinics and layouts to tour. Again some really great layouts by very proficient modelers. I also got to do a little railfanning as Amtrak was making its station stop in Springfield and watched its departure north to Chicago. Saturday night brought the keynote speakers and the auction.

On Sunday we attended the Springfield Model Railroad Club's Train Fair which came free of charge to enter with our convention registration. It was a very nice show with lots of vendors. The thing that I enjoyed most about the show was that there were vendors there that I don't see here in our area. Different items for former area railroads like the GM&O and Illinois Central along with just a different selection of merchandise. The disappointing thing about the train show for me was a lack of operating layouts, I believe there were only three.

A big thank you to the Illinois Valley Division for hosting the 2012 convention. I had a great time, it was well worth attending.

I would now like to change the subject slightly and encourage all of you to make plans to attend next years Midwest Region Convention, "MILEPOST 50", which is being hosted by our division. I think you will be very pleased with what we will have to offer in 2013. We will have more than 25 layouts for you to visit along with operating sessions as well as 24 clinics. Plans are also in the works for a prototype tour of some sort. Saturday night will bring the banquet with great food and a keynote speaker. Sunday brings the train show with many vendors and tables available for a fee so that you can sell those unwanted things that may be a treasure to someone else. I am sure that you will be able to find plenty of things that will provide you with new and interesting ways to improve your modeling skills and your model railroads. Oh, and of course, the comradery of fellow model railroaders.

You can be assured that the wives (non-rail) will have plenty of opportunities to have a great time at the conference too. Their entertainment will include such things as informational clinics, self-organized side trips to various attractions in Indianapolis and many other things such as bingo and arts & crafts projects. So bring your wives along as there will be plenty for them to do while we pursue our hobby.

I hope to see you next May 2nd through the 5th in Indianapolis when the Central Indiana Division hosts the 2013 Midwest Region Convention "MILEPOST 50". Continue to watch the Rusty Spike and the CID website for more information.



**Keith Clark**  
**Assistant Superintendent**



## Back Shop

The CID has lined up members with the experience to help solve your problem and are willing to help ALL modelers, whether or not you are a member of the NMRA. We believe that we can help and be of service to you. If you can get your problem or problems solved, you can better enjoy the hobby of model railroading.

**Contact: [cid\\_backshop@railfan.net](mailto:cid_backshop@railfan.net)**

# Upcoming Events

## – Division Schedule –

### Fall Layout Tour September 22, 2012

Bloomington Area, 6–7 layouts will be open, Complete information in next Spike

### Carmel Library Train Show – November 10, 2012 – Carmel, IN

### Danville Train Meet – November 17, 2012 – Danville, IN

## – Extra Board –

### 5th Annual Rosedale Strawberry Festival Hobby Show – June 1, 2 & 3, 2012

Model Train Show & Swap Meet, Model Air Show, R.C. Car Races, Model Contests  
Florida Township Civic Center, 9 S. Main Street, Rosedale, IN

Weekend of entertainment with strawberries galore and plenty of good food

Friday 4pm - 9pm, Saturday 10am - 6pm and Sunday 10am - 3pm

Free Admission (8ft. Vendor Tables \$5.00 each) / Operating layouts

**For more information:** John Muciarelli at (765) 832-1051 or johnmooch@yahoo.com

### Alleghany & Western Model Railroad Club Open House – June 2 & 3, 2012

3139 Allison Ave., Indianapolis, IN

View the layout featuring the Cass Scenic Railroad in West Virginia

Saturday 11am – 6pm and Sunday 12pm – 5pm

Donation Accepted

**For more information:** Bill Moore at (317) 997-7964 or Trainman01@gmail.com

### NMRA National Convention/Grand Rails 2012 – July 29 through August 4, 2012

Devos Place Convention Center, 303 Monroe Avenue NW, Grand Rapids, Michigan

National Train Show, August 3 – 5

**For more information:** [www.gr2012.org](http://www.gr2012.org)

#### **Upcoming CID Board Meetings**

Date: June 10, 2012

Location: Noblesville Library (Hamilton East)  
One Liberty Plaza  
Noblesville, Indiana

Time: 1:30 PM

CID members are welcome and encouraged to attend.  
Board members can confirm location and date.

Date: August 12, 2012

Location: TBA

Time: 12:00 PM

This meeting is for Executive Board members only.

#### **Rusty Spike Closing Dates**

Volume 42 Issue #4 – July 8, 2012

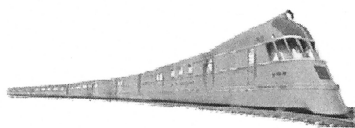
Volume 42 Issue #5 – September 16, 2012

Volume 43 Issue #1 – December 9, 2012

Dates are tentative and subject to change.

**Attention** – All notices of club open houses, or other shows & meets will be included in the **Extra Board** only if the official request form is used. This form may be printed off the CID website at:  
[http://cid.railfan.net/Extra\\_Board\\_Request\\_Sheet.pdf](http://cid.railfan.net/Extra_Board_Request_Sheet.pdf)  
Fill out the form and send to the address listed on the form. Upcoming deadlines for each Rusty Spike are listed in the Spike or may be obtained from Keith Clark (see pg. 2). Events not sent on the request form cannot be included.

## STREAMLINED BACKSHOP SERVICES



[www.SBS4DCC.com](http://www.SBS4DCC.com)

**Bryan Vianco**  
NMRA#139159  
[sales@sbs4dcc.com](mailto:sales@sbs4dcc.com)  
317-201-4974



DCC INSTALLATION • REPAIRS • PARTS • ASSEMBLY

## Naptown & White River Model Railroad Club



1115 McDougal Street  
Indianapolis, IN 46203  
[www.naptownrrr.org](http://www.naptownrrr.org)  
**317-643-0143**

Justin L. Grayson, President  
[naptownrrr@aol.com](mailto:naptownrrr@aol.com)

**Visitors Welcome: Monday Nights, 7-9pm**  
Memberships Available

**[www.railroadbooks.biz](http://www.railroadbooks.biz)**

**800-55-GRIND 800 554-7463**

**812-391-2664**

**[chuck@railroadbooks.biz](mailto:chuck@railroadbooks.biz)**

**new..used..buy..sell**

**Chuck Macklin**

PO Box 4 - Bloomington IN 47402-0003

*the history of technology*



## IMPERIAL VALLEY RAILROAD



*America's Food Basket*

Frank J. Hermanek, MMR, Pres.

715 Three Mile Ridge

Lawrenceburg, Indiana 47025

812-537-5156



## NMRA ARRIVALS

Walter Aldoriso	Greenfield, IN
Robert Babcock	Bloomington, IN
James E. Craig	Bedford, IN
Dan Green	Lebanon, IN
Donald McKelvey	Plain City, IN
Robert Parsons	Indianapolis, IN
Paul Sojka	West Lafayette, IN
Mack Thomas	Unionville, IN
Nathan Titus	Noblesville, IN
Herbert Vankeuren	Carmel, IN
Kyle Young	Spencer, IN



### TRAIN CITY INNOVATIONS

Where Bright Ideas become Innovative Products™  
Z, N, HO, O, O27, G, 1 Scale

- Specialist in Model Trains Repairs of American & European brands
- Train Lighting, DCC conversion, Model Railroad Electronics
- Custom built Modular, Shelf, Desktop and Coffee table Train Layouts
- Signals and Automatic Signal Controllers, Scenery, Dioramas, Special effects
- We also Buy & Sell used Model Trains, Collections and Hobby Store surplus

Sales: 317-849-5040 - Fax: 832-383-0363

Email: [sales@traincityinnovations.com](mailto:sales@traincityinnovations.com) Website: [www.traincityinnovations.com](http://www.traincityinnovations.com)

### History of the Evansville, Indianapolis & Terre Haute Railroad *A division of the NYC system*

**CLOSE OUT SALE**

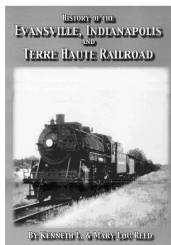
**\$10.00 + \$3.00 s/h**

**KL Reed**

**937 N Boston Ln**

**Republic MO 65738**

**Phone: 417-732-9566**



**Rusty Spike Vol. 42 No. 3**

**©Copyright 2012**

**Central Indiana Division,  
Midwest Region, N.M.R.A.**



## CID Election Results

Thanks to everyone who voted in the recent CID election. All slated candidates were elected and we had a successful write-in Trainmaster candidate. Beginning May 15, the following will begin their two-year term on the CID Board of Directors.

Steve Studley – Superintendent  
Keith Clark – Assistant Superintendent  
Rich Seymour – Chief Clerk  
Tom Fitzsimmons – Paymaster  
John Pancini – Trainmaster  
Jack Simpson – Trainmaster  
Dave Randolph – Trainmaster

I'd also like to thank the Nominations and Election Committee for their work on the process; Al Kohut, Dan Goins, and Brad Philbrick.

**Steve Studley**  
**Superintendent**

## Martinsville Meet's Second Year As Good As The First

On a stormy April Saturday our second meet at the Martinsville armory went very well. The heavy rain seemed to deter some, as we saw fewer families and children so with 253 paid, attendance was down a bit from last year. However the modelers came in force, there was a lot of good fellowship, and the dealers were happy with their sales. I estimate there were over 40 folks involved with layouts, dealers, and CID members working the show so the action was heavy before the public came in at 10. My point? Any CID member who volunteers to help at one of our shows has the chance to get a first look at what the dealers bring.

We somehow squeezed in 21 dealers, on 60 tables, along with 9 layouts and 2 historical societies. I introduced name tags for the dealers since I have seen these same faces for years and often find I don't know their names. Due to the soldiers borrowing tables we unexpectedly came up 20 short on set up and had to go as far as Bloomington for rentals to make up the shortfall.

Thanks to all who brought their layouts and to Paul



All sale tables were again sold out this year. Shown here are some of the tables with a vast array of items to purchase.  
(Photo by Rich Seymour)

Brown for submitting a very intricate ATSF drop bottom stock car built from a resin kit for AP judging.

Our annual meeting featured the State Of The CID Report from superintendent Steve Studley and treasurer Tom Fitzsimmons. Steve outlined our principal activities over the past year and commented on the Springfield MW regional which a group of us attended. Our filing for 501C3 charitable institution status was reported: all completed and we are now waiting on official approval, and plans for the 2013 Milepost 50 regional in Indianapolis were outlined. The current officers were thanked for their service and trainmaster election results were announced.

Thanks to all who helped make this meet run so smoothly, especially the Friday set up crew from the Morgan Co Model RR association and Amanda & Adeline Jones, also Jim Wilhite for the planning, John Pancini for promotion and Jimmy Hunter for hosting the dining car.

**Trevor Jones**  
**Martinsville Meet Co-Manager**

### Martinsville Favorite Contests

#### ≈ Favorite Train ≈

Newman Atkinson (Winner)  
Schneider Nation Train with Triple 53's

#### ≈ Favorite Caboose ≈


Tom Cain (Winner)  
ATSF #1947R





**CENTER POINT**  
**LINE**  
 "SERVING THE HOOSIER STATE"  
 WITH  
 COAL LUMBER PRODUCE  
 GRAIN MANUFACTURED GOODS  
 RUSS & TINA CURRY  
 MEMBER OF PORTFOLK NORTHERN CORP.  
 611@abcs.com

  
**CIRCLE**  
**ISOSCLES**  
 AND  
**LATERAL**  
 RAILWAY  
**THE MEDIAN LINE COMPANY**


  
**Roger Hensley's**  
**East Central**  
**Indiana**  
**HO Scale Railroad**  
 NMRA Pike Registry  
 602 E. 31st St. - Anderson, IN 46016  
 Ph. (765) 649-2367


Buttercup Valley & Denver  
 Short  Line  
 JIM & LUANA WILHITE ANDERSON, IN.

  
**Hoosier Lines**  
**Model Railroad Club**  
 Serving model railroaders  
 in  
 South-Central Indiana  
  
 Bloomington

**THE**  
*tinker* *mountain*  
 RAILROAD  
 \* \* \* \* \*  
 a BASEMENT EMPIRE  
 connecting with the C&O  
 Owner: TED LUCE Lafayette, Indiana

  
**The Rebel Route**  
 Serving Meridian, Mississippi  
 with connections to the Meridian & Bigbee RR  
 Owner: Robert Sharp  
 Bloomington, Indiana

  
**Santa Fe**  
*all the way*  
 The Illinois Division of  
 the Santa Fe Railway  
 Paul Brown, Superintendent

**MIDWEST CENTRAL RAILROAD**  
 A bridge route linking the east with the west  
  
 Steve Studley, owner  
 Bloomington, Indiana  
 Phone (812) 876-9726  
 studley@indiana.edu  
 Route of the Midwest Meteor

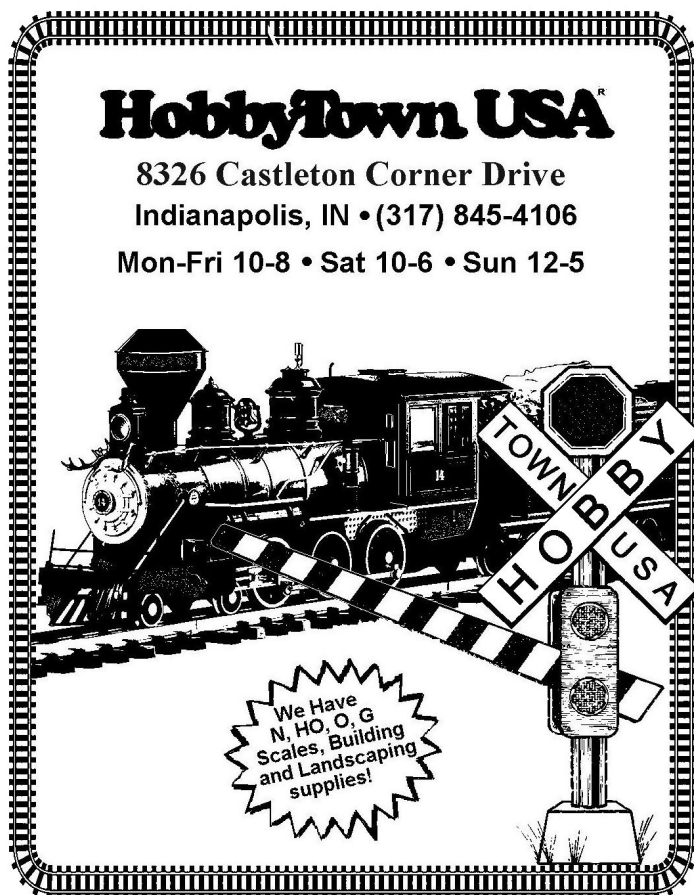
  
**Keith A. Clark**  
 Superintendent  
 Bloomington, Indiana  
 Phone (812) 876-6799  
 gtwfan@bluemarble.net  
 In the 1970's  
 The Flint, South Bend and Kalamazoo Subdivisions



**"Rusty Spike"**  
CENTRAL IND. DIVISION  
MWR-----NMRA  
4132 W. Briar Gate Dr.  
Bloomington, IN 47404

PRESORTED  
STANDARD  
US POSTAGE PAID  
BLOOMINGTON, IN  
PERMIT NO 171

**Return Service Requested**



**1005 E. Main Street, Plainfield, Indiana**  
[Across from PSI - 6 miles west of Airport on US 40]

Serving the needs of the Model Railroader  
with a large selection of  
N, HO, O TRAINS, DETAIL PARTS,  
BOOKS, MAGAZINES, ACCESSORIES,  
PAINT, DECALS, TOOLS, VIDEOS  
AND HOBBY SUPPLIES

*Featuring Friendly Customer Service*

**HOURS:**

Monday - Friday 10 a.m. - 8 p.m.  
Saturday 10 a.m. - 5 p.m.

VISA, MASTERCARD, PERSONAL CHECK  
For information call

**317-837-1024**